

# FOR SALE/LEASE

# FIFE INDUSTRIAL



- **18,754 SQ. FT.**  
**(1,830 SF OFFICE, MEZZ, BATHROOM)**
- I-5 VISIBILITY ADJACENT TO LARSEN CADILLAC.
- **1.24 ACRES**  
-ABUNDANT PARKING WITH SECURED FENCE AREA APPROX 30 STALLS.
- 3 GL DOORS  
(ONE 14'X16', TWO 12'X12').  
-FLOOR DRAINS  
-SPRINKLERED  
-30' X 40' COLUMN SPACING
- AVAILABLE AND READY TO TOUR  
Please check [City of Fife CMU](#) zone prior to inquiring  
**\$4,315,000**

6407 20<sup>TH</sup> Street East Fife, WA



For more information please contact:

**Brent Nelson**  
425.455.2664  
brent@saratogaequities.com



**SARATOGA**  
EQUITIES

www.saratogaequities.com



# Fife Warehouse – 6407 20<sup>TH</sup> Street E.



For more information please contact:

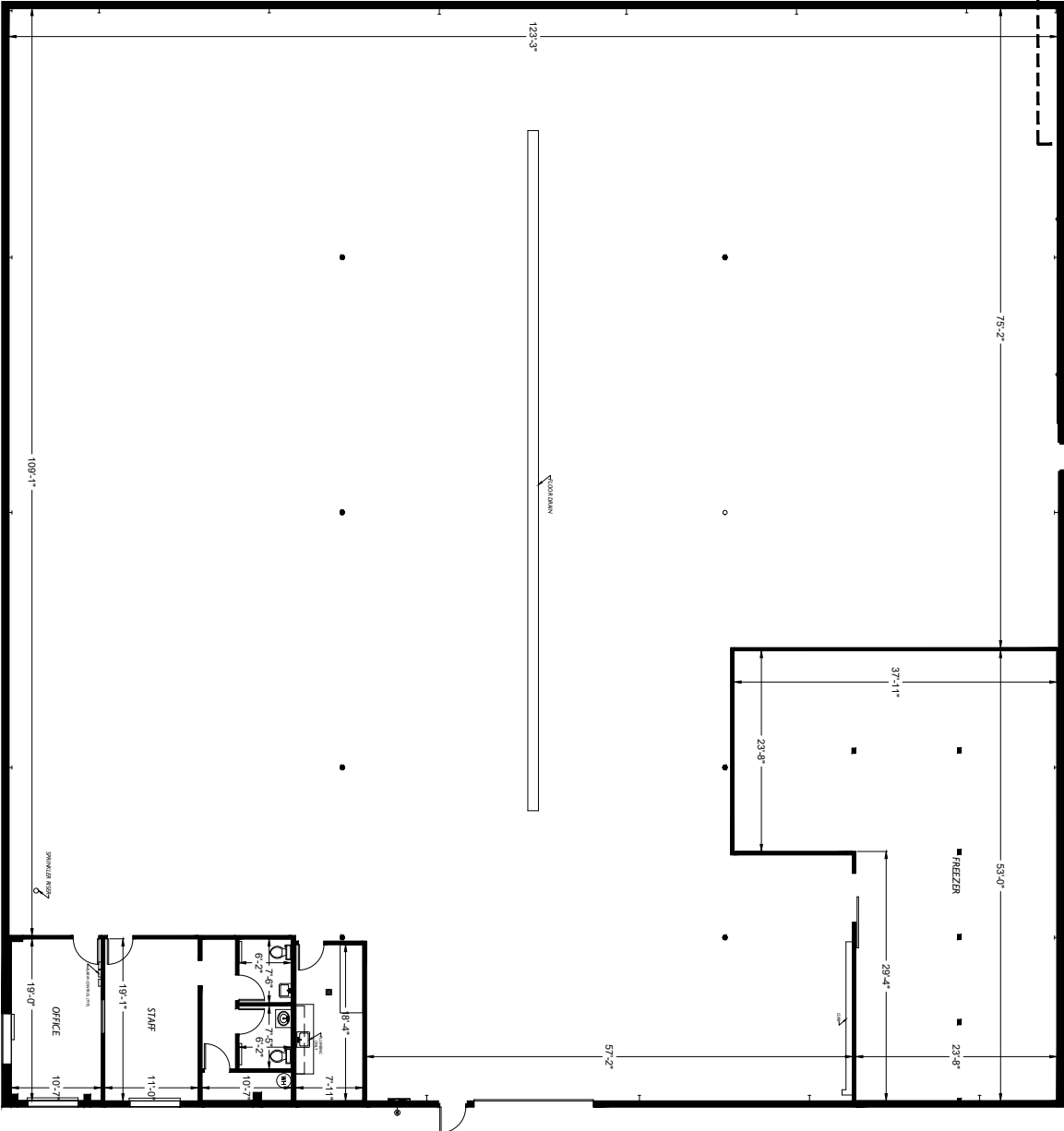
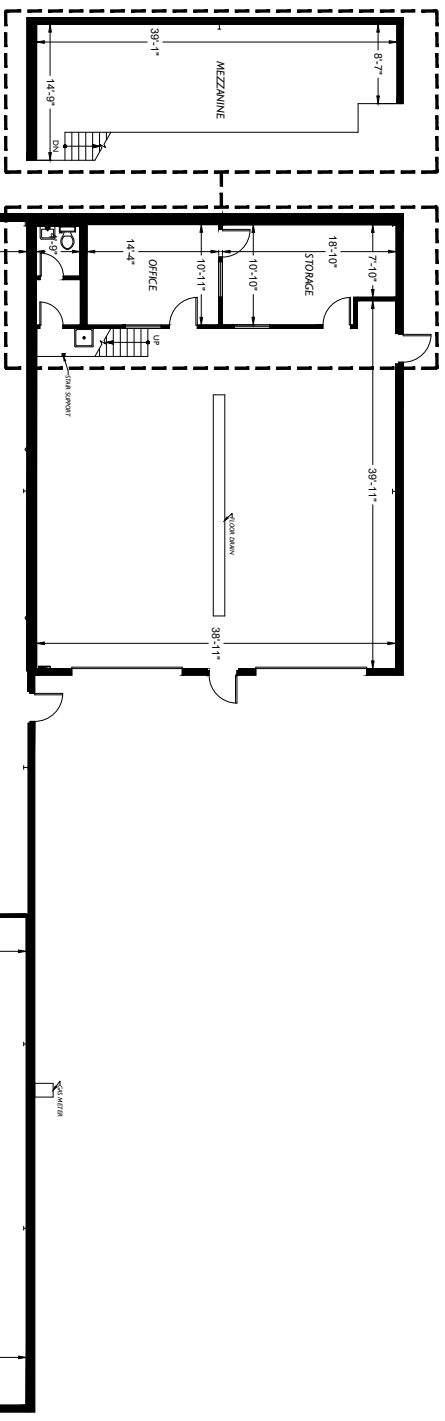
**Brent Nelson**  
425.455.2664  
brent@saratogaequities.com



**SARATOGA**  
EQUITIES

[www.saratogaequities.com](http://www.saratogaequities.com)





Parking  
 20th Street E

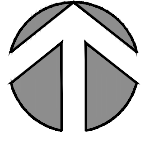


Project: C24-167

Date	Action
11/10/24	Final Floor Measurement
05-10-23	

Client:  
 PCK-DLK II, LLC

Site:  
 Office/Warehouse Building  
 6407 20th Street E  
 File: WA 98424



Floor Plan

1

Floor

